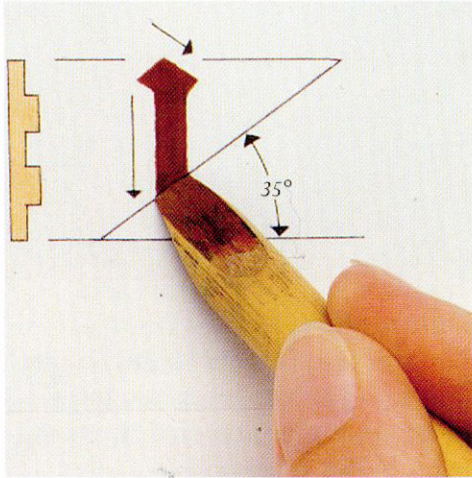
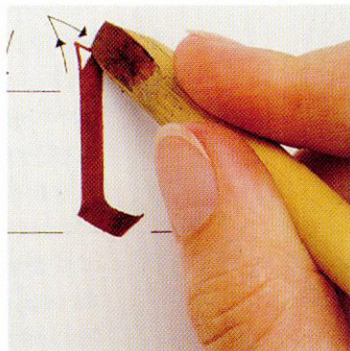
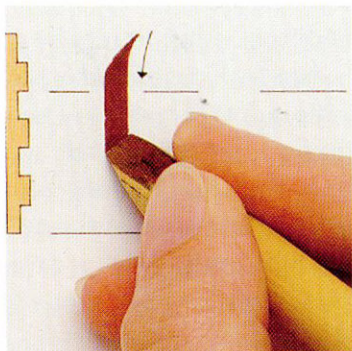


Textura Quadrata

THE ESSENCE OF THE Quadrata is the formal, upright letter with strokes differing as little as possible from one another. Curves are practically eliminated and the formality is only broken by the use of hairlines. These include the skating strokes that occur on letters *a*, *e*, and *r*, created by dragging the wet ink with the corner of the nib. The Quadrata's other distinctive features are the split ascenders and the diamond feet on the minims, applied with only a small space between each one.



Basic elements
A "slanted" pen (square-cut nib) is used for the Quadrata. The pen is held at an angle of between 35° and 45° for stem strokes, adjusted to a shallower angle for connecting strokes. Minim height is generally about five pen widths. The relatively large size of the letters makes the use of a reed pen ideal.

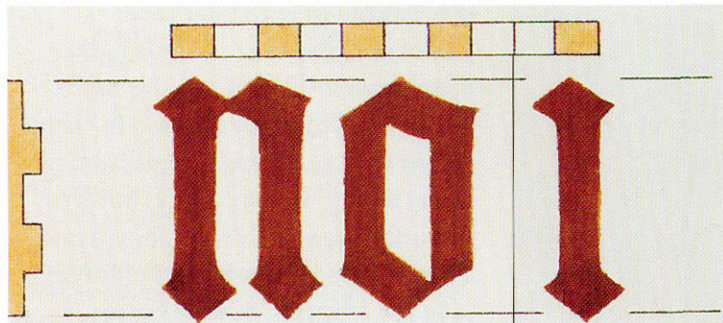


Drawing a right serif

The split ascender is drawn in two strokes. Begin the right serif above the headline, pulling the pen down to the left to complete the stem in one stroke.

Adding a left serif

The pointed left serif should be a little shorter than the right one. Turn the nib onto its left corner and use the wet ink from the previous stroke.



Textural effect

To achieve the ideal textural effect of Quadrata, innerletter spaces and interletter spaces should each equal the width of one stroke.

Interword space should be equal to about two nib widths

The bowl of the a can be more rounded

The final stroke of the c can be finished with a hairline

Join the third stroke of the e to the stem of the minim

The ear of the g could also be drawn as a separate stroke

The upward stroke above the i and j can be substituted for a full diamond stroke

